



Aberdare Gardens NW6

Parkheath
Sold on Service





Aberdare Gardens, NW6

£975,000

Share of Freehold

- Exceptional two bedroom, two bathroom apartment set on one of South Hampstead's most desirable roads
- Occupying the entire first floor of an imposing Victorian building
- Spacious 18' reception room with feature fireplace and garden view
- An abundance of natural light with high ceilings and engineered real wood flooring throughout
- Spacious fully fitted kitchen/breakfast room
- Principal bedroom with fitted floor to ceiling wardrobes and en-suite bathroom
- Second double bedroom with fitted floor to ceiling wardrobes
- Beautiful period features including sash windows, cornicing and arched doorway
- Approximately 8 minutes' walk to Finchley Road Underground Station (Jubilee & Metropolitan Lines, Zone 2)
- Chain free, EPC Rating C, Council Tax: Camden band F

Belsize Park/Hampstead
208 Haverstock Hill
NW3 2AG
Sales 020 7431 1234
Lettings 020 7431 3104
nw3@parkheath.com

South/West Hampstead
192 West End Lane
NW6 1SG
Sales & Lettings
Tel 020 7794 7111
192@parkheath.com

Kensal Rise
54-56 Chamberlayne Rd
NW10 3JH
Tel 020 8960 4845
kensal@parkheath.com

Property Management
192 West End Lane
NW6 1SG
020 7433 6174
pm@parkheath.com

Parkheath
Sold on Service

Camden Tax band F

www.parkheath.com

Aberdare Gardens, London, NW6

Approximate Gross Internal Floor Area = 91.7 sq m / 988 sq ft

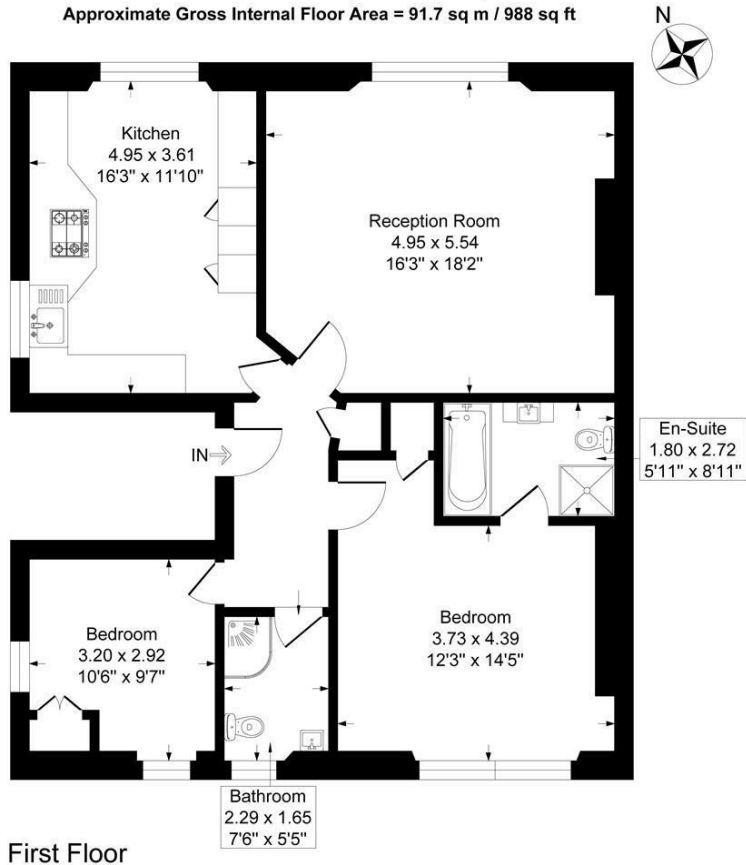
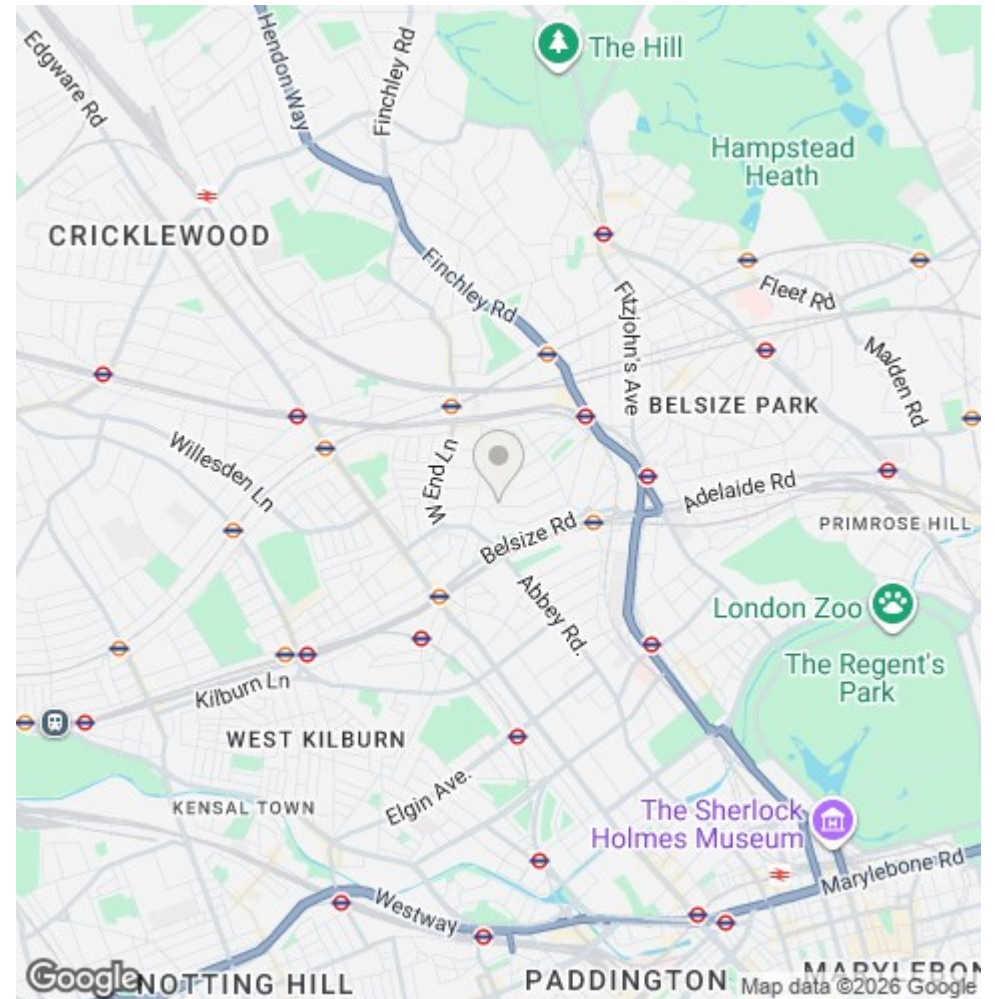


Illustration for identification purposes only, measurements are approximate, not to scale.



The particulars do not constitute part of an offer or contract. The particulars, including text, photographs and plans, are for the guidance only of prospective purchasers/tenants and must not be relied upon as statements of fact. The descriptions provided therein represent the opinion of the author and whilst given in good faith should not be construed as statements of fact. Nothing in these particulars shall be deemed a statement that the property is in good condition or otherwise or that any services or facilities are in good working order. All measurements are approximate